

# Steeking Class



In this class we will be practicing steeking a piece of knit work using two different reinforcement methods. Method one will use a crochet hook and a contrasting yarn. The second method will be using a sewing machine.

Both methods work equally well.

After the steek is reinforced, we will take scissors to the work and cut it in two. Scary, I know, but it works! The piece will not unravel, fire and brimstone will not fall from the sky, and the sun will come up tomorrow. Trust me.

Depending on the time we will also show how to add a button band and how to conceal the edge stitches on the back side.

## Prerequisites

Experience with color work knitting (knitting two colors at once).

## Homework

Prior to coming to class please complete the two swatches, so as not to hold things up. I would like to get right to it.

## Materials

- For Swatches: Wool yarn of your choice, at least two contrasting colors, DK, worsted, or Aran weights. Enough yardage to complete the 2 swatches (approx. 8" x 8") plus enough for a button band. I think 50 yds of each color would be more than enough.
- Needles for knitting the swatches.
  - **NOTE:** The yarn should **NOT** be any of the following: Acrylic or acrylic blends, super-wash wools, cottons, or linens. Steeking requires that the fibers around the steek stick together the fibers listed above do not bind well enough to ensure a secure steek. Friction is your friend.
- For button band: 2 sets of circular needles 24" or greater of appropriate size for chosen yarn (US 4 through US 8 should suffice).
- A crochet hook suitable for your yarn choices.
- For the crochet steek you will need approximately 5 yds of a wool yarn (see note above) of thinner weight than the yarn used in your swatches. Preferably of a third contrasting color. Sock or fingering weight works best.

## Swatches

For homework, you will knit two colorwork swatches. One for the crotchet reinforcement technique and one for the sewing technique.

Both swatches are knitted flat for this class. **You will need to complete the two swatches prior to coming to class.**

I recommend blocking the swatches with a wet towel and steam iron to minimize any curling. I will make the work easier and help bind the fibers prior to steeking.

## Crochet Swatch

With the exceptions of columns 17-21 (the steek stitches) the colorwork pattern below is flexible. Don't fret if you make mistakes. The important thing is that the 5 steek stitches make nice vertical stripes. Those stripes will be our guides.

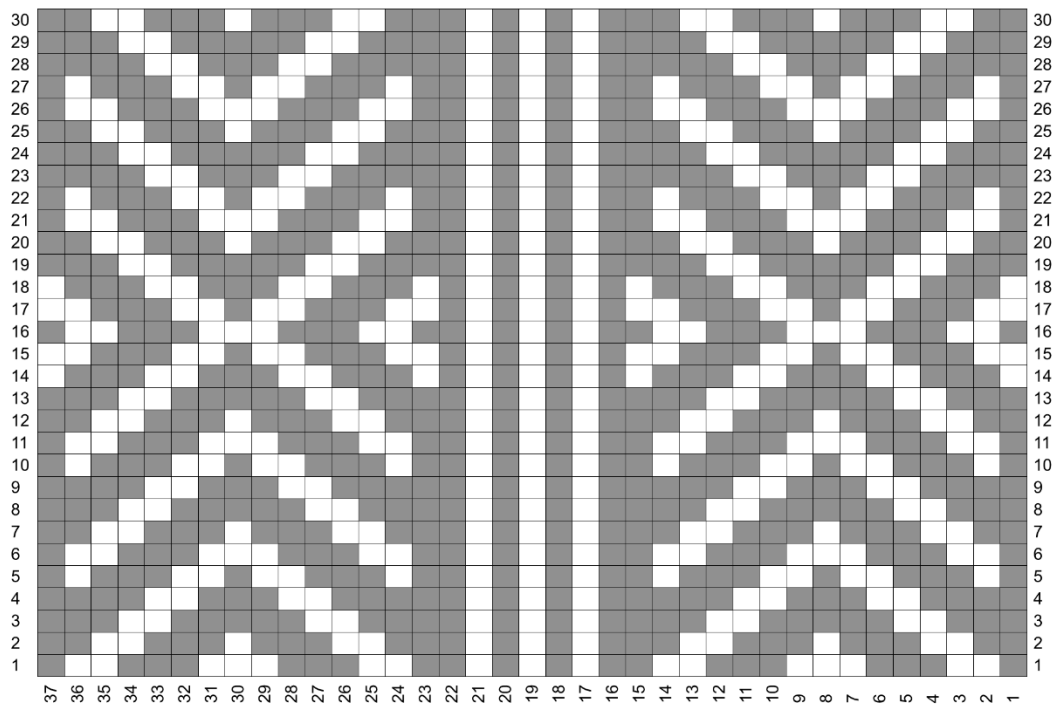
Cast on 37 sts using long tail cast-on (or cast-on of choice).

Work flat following color chart below.

Bind off using your preferred method.

Block the piece to remove as much curl as possible.

### Crochet Swatch



Yarn		Stitches	
<input type="checkbox"/>	CC (A)	<input type="checkbox"/>	RS: k; WS: p
<input checked="" type="checkbox"/>	MC (B)		

## Sewn Swatch

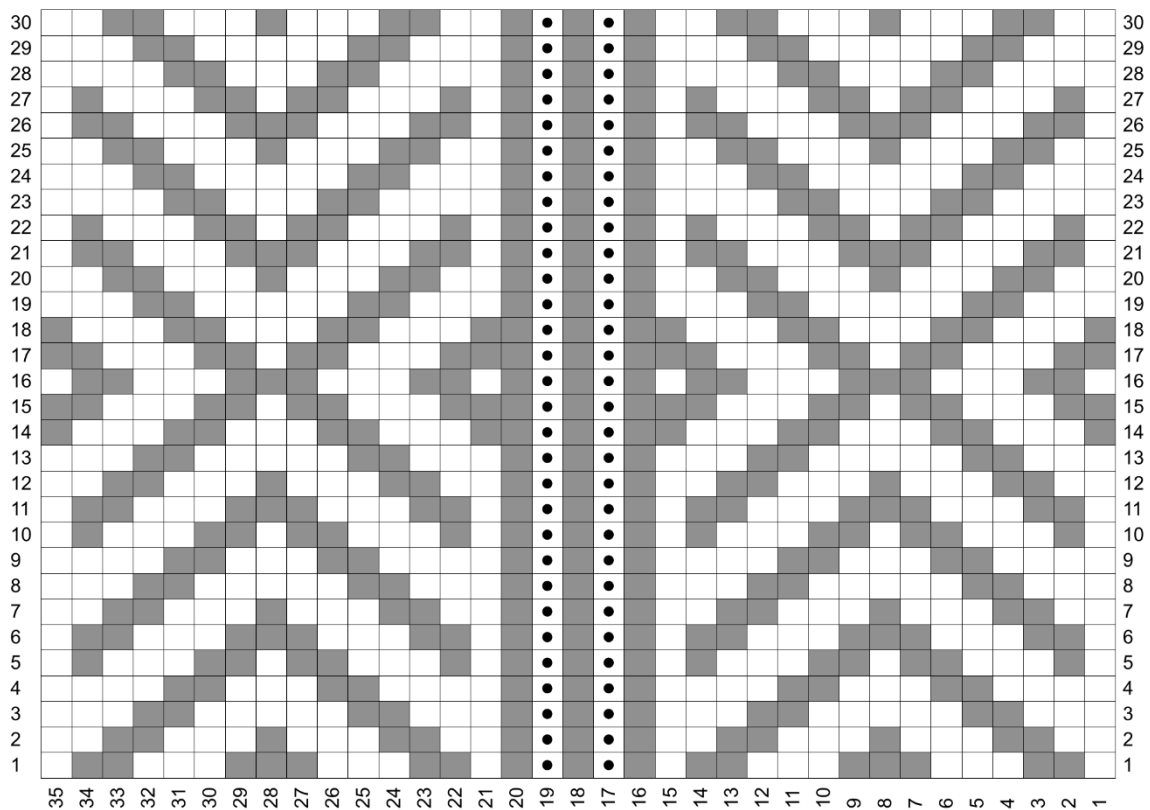
Except for columns 17-19 (the steek stitches) the colorwork pattern below is flexible. Don't fret if you make mistakes. The important thing is that the 3 steek stitches are PKP on the RS and KPK on the WS. I recommend using stitch markers after column 16 and after column 19.

Cast on 35 sts using long tail cast-on (or cast-on of choice).

Work the color chart below in stockinette with the exception of the 3 steek stitches are PKP on the RS and KPK on the WS.

Bind off using your preferred method.

## Sewn Steek Pattern



Yarn		Stitches	
<span style="display: inline-block; width: 15px; height: 15px; background-color: #cccccc; border: 1px solid black;"></span>	CC (A)	<span style="display: inline-block; width: 15px; height: 15px; background-color: #cccccc; border: 1px solid black;"></span>	RS: k; WS: p
<span style="display: inline-block; width: 15px; height: 15px; background-color: #333333; border: 1px solid black;"></span>	MC (B)	<span style="display: inline-block; width: 15px; height: 15px; background-color: #cccccc; border: 1px solid black; position: relative;"><div style="position: absolute; top: 50%; left: 50%; transform: translate(-50%, -50%); font-size: 10px;">•</div></span>	RS: p; WS: k